



INFORMER

11, Late July 2007

Professional Engineers in California Government

Budget, Budget, Where's the Budget?

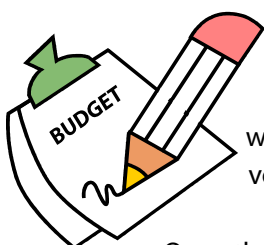


As this is written (August 2, 2007), the Legislature has still not approved a State Budget for the fiscal year which began one month ago. All PECG-represented employees (Unit 9, supervisors, managers, and CEA's) are receiving their **July paychecks** in full and on time, like most (but not all) other state employees. However, the **raises** scheduled for July 1 will be paid in supplemental checks after the Budget is approved.



The Assembly passed its version of the State Budget on July 20 and then recessed for the next month. However, the Budget requires two-thirds approval in each house of the Legislature and signature by the Governor. While the 25 Senate Democrats voted to approve the Assembly version, none of the 15 Republicans would agree to that. 27 votes are required for Budget approval in the Senate. Thus, the stalemate began.

If the Senate approves the Assembly version of the Budget, it goes to the Governor for his signature (or "blue pencil" reduction of specific budget items, if he wishes). If the Senate passes a different version, the Assembly will have to return from its recess to vote on those amendments.



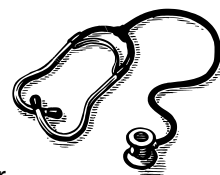
Once the Budget is more than a month late, state vendors go unpaid, funding allocations are delayed, and there are various other consequences. This will put increased pressure on the Legislature and the Governor to adopt a new State Budget, which will be the authorization for the State to resume paying its bills.

Check the PECG Hotline and website for the latest update on the status of the State Budget.



Health and Dental Plans

In addition to administering retirement plans, the Public Employees Retirement System (PERS) is also responsible for **health plans** for state employees. After considerable debate, in May the PERS Board approved an increase in HMO co-payments for doctor visits from \$10 to \$15, which has become fairly standard for many private sector plans, but rejected numerous proposals to increase other employee co-payments. (See Informer #8, May 2007).

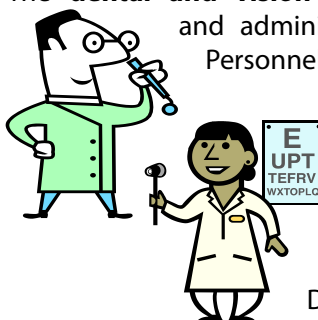


In June, the PERS Board completed negotiations with health plan providers for premium increases beginning next January. The premium increases will average 6.3% (7.4% for HMOs) which is considerably lower than increases in recent years.

The Board also terminated the Western Health Advantage coverage (despite objections by PECG and others) and eliminated Blue Shield coverage in four Northern counties.

What does this mean regarding the employees' share of the premium? The **85%/80% formula** remains in effect for Unit 9 employees, meaning that the State continues to pay the bulk of any premium increases, based on a weighted average of the four largest providers. Those calculations are still being compiled and should be available in late August. PECG will provide that information for members prior to the open enrollment period (for changing health plans) which begins on September 17 and runs through October 12.

The **dental and vision** plan benefits are contracted and administered by the Department of Personnel Administration (DPA). For next year, the premiums for the two pre-paid dental plans will remain the same and the vision care plan continues to be fully paid by the state. Thus, the only change will occur for Delta Dental coverage. The employee contribution for that plan will increase by less than \$1 per month.



PECG'S WEB SITE ADDRESS: www.pecg.org

PECG HEADQUARTERS (916) 446-0400
 660 J Street, Suite 445, Sacramento, CA 95814

LOS ANGELES (818) 500-9941
 505 N. Brand Blvd., Suite 740, Glendale, CA 91203

SAN FRANCISCO (415) 861-5720
 1 Sutter St., Suite 800, San Francisco, CA 94104

PECG ANNOUNCEMENT

Sacramento Callers.....(916) 446-PECG
 Outside Sacramento..... (800) 403-2845

TELEFAX

Headquarters..... (916) 446-0489
 Los Angeles..... (818) 247-2348
 San Francisco..... (415) 861-5360

PECG INSURANCE INFO (415) 956-1344

PECG TOLL FREE NUMBERS

Sacramento..... (800) 338-1480
 Los Angeles..... (800) 834-3515
 San Francisco..... (800) 924-5575



NOMINEES FOR PECG CORPORATION OFFICE



The following are the candidates for PECG Corporate Office for 2007-2008. Ballots will be mailed to all PECG members on August 10, 2007. The nominees are:

PRESIDENT ELECT

- Mark Sheahan:** Former Corporation President; current Legislative Chair; Transportation Surveyor, Range D.
- John Roberts:** Former Corporation President; member, Collective Bargaining Team; Landscape Associate.

VICE PRESIDENT – COLLECTIVE BARGAINING

- Robert McNew:** Corporation Vice President, Collective Bargaining; Chair of the Bargaining Team; Transportation Engineer, Range D.
- D’Arcy McLeod:** Former Marysville Section Director and President; member, Collective Bargaining Team; Transportation Engineer, Range C.

VICE PRESIDENT – SUPERVISORY

- Mark Miller:** Former Redding Section Director and President; Senior Transportation Engineer, Supervisory.
- Refugio Dominguez:** Member, PECG Meet and Confer Team; Senior Transportation Engineer, Supervisory.

VICE PRESIDENT AT LARGE

- Michael Gjerde:** Corporation Vice President At Large; Engineering Geologist, Range D, Water Resources Control Board.
- Jennifer Kofoid:** President, Capitol Section; Engineer, Water Resources.

SECRETARY

- Joya Gilster-Nava:** Inland Empire Section Director; member, Collective Bargaining Team; Transportation Engineer, Range C.
- Curtis Beitz:** Corporation Secretary; Transportation Engineer, Range C.

TREASURER

- Chris Jensen:** Former Stockton Section Director and President; Transportation Engineer, Range D.
- Arthur P. Duffy:** Corporation Treasurer; member, Collective Bargaining Team; Transportation Engineer, Range D.

This year’s President-Elect, Roger Barnes, a Transportation Engineer in San Luis Obispo, will become the Corporation President in October. The current Corporation President, Matt Hanson, a Transportation Engineer in Sacramento, remains on the Board of Directors as Past President for 2007-2008.

It is important that all PECG members have the opportunity to vote for the Corporate and Section officers who represent you. If you are a member and received this Informer at your correct mailing address, you will receive a ballot for the Corporation Officer Election when they are mailed out on August 10. If you are reading someone else’s Informer because you didn’t get one, please call (916-446-0400) or email (pecg@pecg.org) and give us your correct mailing address. If you are a non-member (Unit 9 feepayer or non-member supervisor or manager), join PECG by going to our website at www.pecg.org.



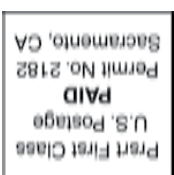
PECG’s policies and decisions are made by your PECG-represented state employee colleagues who volunteer their time and efforts to represent you. You, the members, elect them, so be sure to vote when you get your ballot.

If you’re not a member, JOIN UP! You should be a member if for no reason other than (1) to express your appreciation for your substantial pay raises this year and the past two years and (2) to support the effort to keep those pay raises coming in future years!

If you are a member, SIGN UP A NON-MEMBER! PECG will express its appreciation to you, the recruiter, with a cash award.

Return Service Requested

660 J Street, Suite 445 Sacramento, CA 95814



INFORMER

